

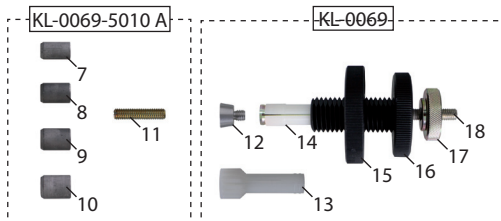
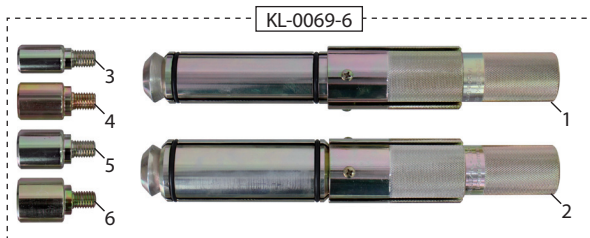
KL-0069-60 KA CLUTCH ALIGNER KIT

KN 9.39

Universally applicable to clutches as found in passenger cars and HGVs.
For example: passenger car clutches having a hub Ø of from 15-29mm and a pilot/guide bearing Ø of from 12-19mm as well as to HGV single-disc clutches and double-disc clutches having a hub Ø of from 36-52 mm and a pilot/guide bearing Ø of from 20-30mm.

Passenger cars both with and without a pilot/guide bearing in the crankshaft: for the quick centric alignment of the clutch disc to the pressure plate, the flywheel respectively. The special design of the tool provides for the perfect centring of the clutch.

HGVs with single-disc clutch or with double-disc clutch: for the quick centric alignment of the clutch disc to the flywheel. The special design of the tool provides for the perfect centring of the clutch.



Technical Data:

KL-0069 clamping range, passenger cars	15-29mm
KL-0069-6 clamping range, HGVs:	36-52mm

Scope of Delivery:

	Part No.	Description	Qty
-	KL-0069-5010 A	Centring Sleeve Set	1
	<i>consists of:</i>		
7	KL-0069-5012	Centring Sleeve, 12mm	1
8	KL-0069-5013	Centring Sleeve, 14mm	1
9	KL-0069-5014	Centring Sleeve, 15mm	1
10	KL-0069-5015	Centring Sleeve, 16mm	1
11	KL-0069-5011	Grub Screw, M8 x 35mm	1

	Part No.	Description	Qty
-	KL-0069	KL-0069 Clutch Aligner	1
	<i>consists of:</i>		
12	KL-0069-0050	Conical adaptor	1
13	KL-0069-0006	Clamping Cone, size 2, 22mm	1
14	KL-0069-0005	Clamping Cone, size 1, 15mm	1
15	KL-0069-5002	Lock Nut	1
16	KL-0069-0001	Base Body	1
17	KL-0069-5003	Clamping Nut	1
18	KL-0069-5004	Clamping Screw	1

Scope of Delivery:

	Part No.	Description	Qty
-	KL-0069-60 KA	Clutch Aligner Kit	1
	<i>consists of:</i>		
-	KL-0069-6	Clutch Aligner, HGVs	1
-	KL-0069-5010 A	Centring Sleeve Set	1
-	KL-0069	Clutch Aligner, Passenger Cars	1
-	KL-0069-6090	Plastic Storage Case	1

	Part No.	Description	Qty
-	KL-0069-6	Clutch Aligner, HGV	1
	<i>consists of:</i>		
1	KL-0069-610	Clutch-Centring Pin, Size 1, Ø 36-44mm	1
2	KL-0069-620	Clutch-Centring Pin, Size 2, Ø 42-51mm	1
3	KL-0069-6001	Centring Piece, Ø 20mm	1
4	KL-0069-6002	Centring Piece, Ø 25mm	1
5	KL-0069-6003	Centring Piece, Ø 27mm	1
6	KL-0069-6004	Centring Piece, Ø 30mm	1

0069-60KAe180607